

**760-780 MHz V-POL**
**Model:QB760-9V**
**Electrical Data**

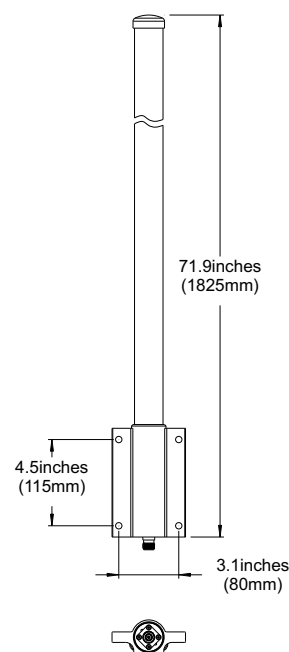
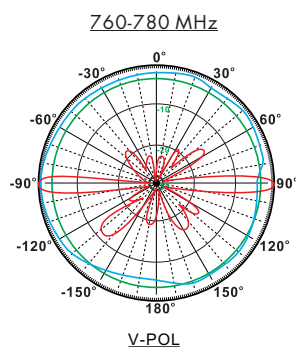
Frequency:	760-780 MHz
Gain:	9 dBi
VSWR:	<1.5:1
Polarization:	Vertical
Horizontal Beamwidth :	360°
Vertical Beamwidth:	12°
Nominal Impedance:	50 Ohms
Max Input Power:	100 W
Lightning Protection:	DC Ground

**Mechanical Data**

Connector :	N Female
Dimensions:	Ø38*1825mm
(diameter*length)	Ø1.5*71.9in
Weight:	3kg/6.6lb
Radome Material:	Fiberglass
Mounting Method:	Mast
Mast Size:	Ø40-Ø90mm
Rated Wind Velocity:	210km/h
Operating temperature:	-40~+65°C

**Shipment Data**

Packing Qty:	1pc/Carton
Carton Size:	1920*125*100mm
(length*width*height)	75.6*4.9*3.9*in
Packing Weight:	4kg/8.8lb



Installation Guide

Model:QB760-9V

