

450-470 MHz H-POL or V-POL
Model:DB450-11-6W
Electrical Data

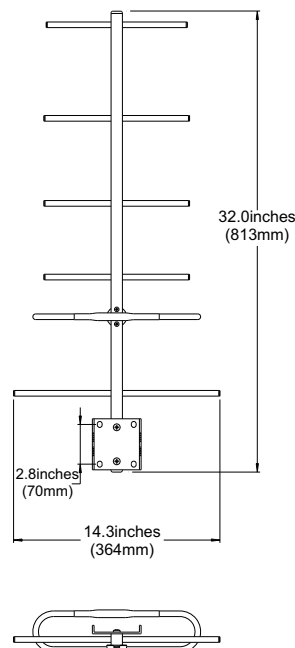
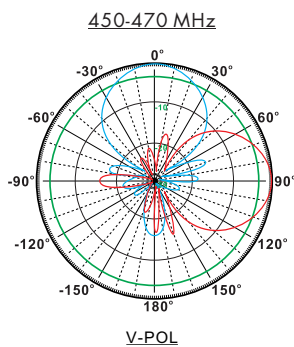
Frequency:	450-470 MHz
Gain:	11 dBi
VSWR:	<1.5:1
Polarization:	Horizontal or Vertical
Horizontal Beamwidth :	48°
Vertical Beamwidth:	43°
Nominal Impedance:	50 Ohms
F/B Ratio:	>16 dB
Max Input Power:	100 W
Lightning Protection:	DC Ground

Mechanical Data

Connector :	N Male
Dimensions:	810mm/31.89in
Weight:	2.5kg/5.51lb
Cable Length:	360mm/14.2
Antenna Material:	Stainless Steel
Mounting Method:	Mast
Mast Size:	Ø40-Ø50mm
Rated Wind Velocity:	210km/h
Operating temperature:	-40~+65°C

Shipment Data

Packing Qty:	5pcs/Carton
Carton Size:	840*390*430mm
(length*width*height)	/33.1*15.4*16.9in
Packing Weight:	14.5kg/31.9lb



Installation Guide

Model:DB450-11-6W

