

403-440 MHz H-Pol or V-Pol
Model:DB410-12-7W
Electrical Data

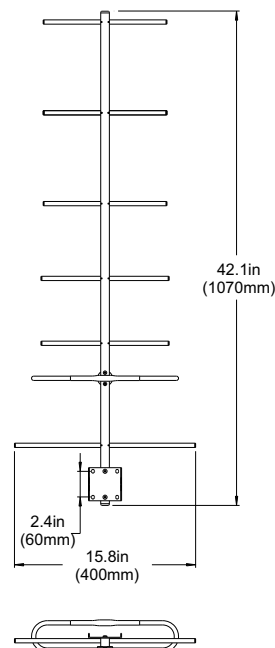
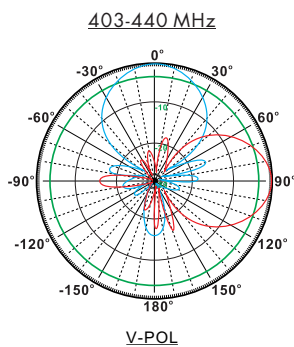
Frequency:	403-440 MHz
Gain:	12 dBi
VSWR:	<1.5:1
Polarization:	Horizontal Or Vertical
Horizontal Beamwidth :	45°
Vertical Beamwidth:	38°
Nominal Impedance:	50 Ohms
F/B Ratio:	>16 dB
Max Input Power:	100 W
Lightning Protection:	DC Ground

Mechanical Data

Connector :	N Female
Dimensions:	1070mm/42.1in
Weight:	1.62kg/3.6lb
Cable Length:	360mm/14.2in
Antenna Material:	Stainless Steel
Mounting Method:	Mast
Mast Size:	Ø40-Ø60mm
Rated Wind Velocity:	210km/h
Operating temperature:	-40~+65°C

Shipment Data

Packing Qty:	5pcs/Carton
Carton Size:	1090*420*430mm
(length*width*height)	42.9*16.5*16.9in
Packing Weight:	12kg/26.4lb



Installation Guide

Model:DB410-12-7W

